

SÜDMO BUTTERFLY VALVES HYGIENIC SHUT-OFF VALVES

PRODUCT INFORMATION

Pentair Südmö's hygienic shut-off Butterfly Valves are used across the process industries including brewing, beverage, pharmaceutical, chemical, cosmetic, and food. Pentair Südmö's comprehensive valve line features both manual and pneumatic drive options, including lockable handles and vertical actuators. The butterfly valve range is available in sizes ranging from ½ to 6 inch OD Tube, Schedule 5, metric, and ISO pipe dimensions, and offers a wide variety of connection types including butt weld, triclamp and small-flange. The special seal design, with an expansion groove, minimizes wear and ensures long service life. Various FDA compliant seal options are available.

No special tools are required to change the seals, making the valve quick and easy to maintain.

A variety of options, including our state-of-the-art IntelliTop®, allow monitoring and control of the valves through the control system. Existing Butterfly Valves can easily be retrofitted with the IntelliTop 2.0.

CUSTOMER BENEFITS

• Butterfly valve discs

- Solid butterfly disc, 316 L stainless steel material (1.4404)
- Highly resistant to aggressive media
- Slide bearing between valve disc shaft and housing flange provides lower switching friction and optimum centering

• Butterfly valve seals

- Special seal geometry guarantees long service life
- The seal is marked for easy identification of size and material
- All seal materials are FDA-compliant

• Butterfly valve housing

- Many different connection types available
- Housing marked for easy identification of material, size and pressure rating
- Optional housing with acceptance test certificate to DIN EN ISO 10204 - 3.1(WAZ) available



Butterfly valves with pneumatic actuator with IntelliTop 2.0 (left) and stainless steel handle (right)



SÜDMO

BUTTERFLY VALVES

HYGIENIC SHUT-OFF VALVES

TECHNICAL DATA

MATERIAL

Product contact

1.4404 (AISI 316L)

Non-product contact

1.4307 (AISI 304 L)

Seals

Standard: EPDM

Optional:

HNBR

VMQ

FPM

PTFE

All seals FDA-compliant.

Other seal materials on request.

OPERATING TEMPERATURES

for EPDM seals

130 °C (266 °F) continuous

150 °C (300 °F) short sterilization

PRESSURES

Control air pressure

Standard 6 bar (87 psi) – 8 bar (116 psi)

Operating pressure

Standard 10 bar (145 psi)

FINISH

Product contact

$Ra \leq 0.8 \mu m$

Non-product contact

$Ra \leq 1.6 \mu m$

Optional

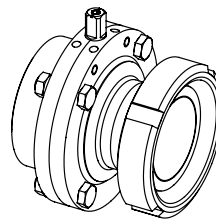
Improved mechanical polish/electropolish

CONNECTIONS

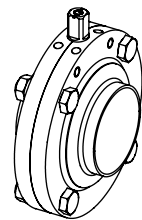
Pipe dimensions to

- DIN 11850 Series 2 (DIN 11866 Series A)
- ASTM A270 (ASME BPE-2009 / DIN 11866 Series C)
- DIN EN ISO 1127 (DIN 11866 Series B)

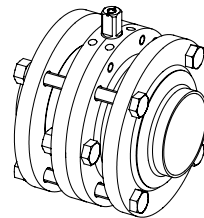
AVAILABLE CONNECTIONS



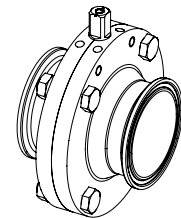
Threaded ends/conical couplings with locknut
(DIN 11851/DIN 11864-1 IDf/RJT/SMS)



Tube butt weld

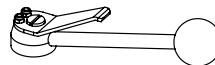


Small flange

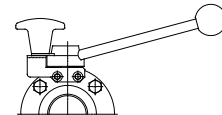


Tri-clamp (DIN 32676/DIN 11864-3)

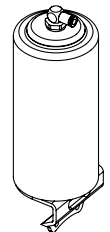
ACTUATOR OPTIONS



Standard handle



Lock-out handle with
mechanical stop



Actuator
- Air to open, spring to close
- Spring to open, air to close
- Air to open, air to close



PENTAIR SÜDMO GMBH

INDUSTRIESTRASSE 7, 73469 RIESBÜRG, GERMANY INFO.SUEDMO@PENTAIR.COM WWW.FOODANDBEVERAGE.PENTAIR.COM

All Pentair trademarks and logos are owned by Pentair. All other brand or product names are trademarks or registered marks of their respective owners. Because we are continuously improving our products and services, Pentair reserves the right to change specifications without prior notice. Pentair is an equal opportunity employer. butterfly-valves-2110-en © 2021 All Rights Reserved.